

ANCHOR CHAIN CORROSION CONTROL

RECOMMENDED USES

- Commercial vessels
- Navy ships
- Offshore oil & gas platforms
- Navigational buoys
- Mooring buoys
- Cruise ships
- Landing craft ramps

A LUBRICATING RUST INHIBITOR THAT REQUIRES NO SANDBLASTING

ADVANTAGES

- No sandblasting
- Can be applied to wet surfaces
- Polar bonds to all metals, even over existing rust and paint
- Stops rust on contact
- Creeps into pitting corrosion, cracks and crevices
- Excellent lubricant and anti-seize
- Prevents corrosion between links
- Dielectric properties; stops electrolysis
- Non-hazardous and non-toxic



ANCHOR CHAIN CORROSION CONTROL

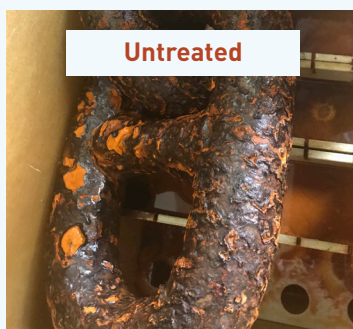
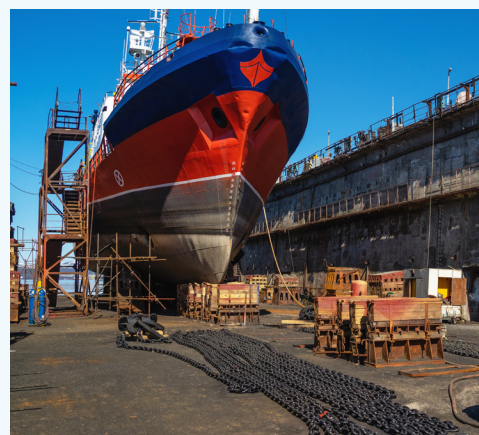
S2S Anchor Chain Corrosion Control works by polar bonding to metal surfaces, like a magnet to steel, displacing water and oxygen. It is a powerful penetrant that creeps into hard to reach areas, providing excellent lubrication and anti-seize capabilities. It requires no sandblasting and is easy-to-apply with an airless sprayer, brush or by dunking.

S2S Anchor Chain is recommended for use on the entire anchoring system, including:

- Chain
- Pipes (spurling, chain, hawse)
- Chain locker
- Anchor windlass
- Windlass brakes
- D-Shackle
- Swivels
- Kenter shackles
- Chain stoppers
- Bolts and pins

POWERFUL PENETRANT

For more than 30 years, S2S has been successfully protecting marine vessels in the harshest environments. S2S Anchor Chain is proven to prevent rust and corrosion caused by salt water, fog and extreme weather. It is non-toxic and has dielectric properties that enable it to halt electrolysis.



Untreated



S2S Treated

After 1000 hrs of ASTM B117 salt spray test.

